



An Coimisiún  
um Rialáil Fóntas  
Commission for  
Regulation of Utilities

An Coimisiún um Rialáil Fóntas

Commission for Regulation of Utilities

# Guidance Notes: Electrical Recognition Process for International Qualifications for Eligible Persons under S.I. 8/2017 – Safe Electric Scheme

## Table of Contents

<b>NOTE TO APPLICANTS</b>	<b>3</b>
<b>GLOSSARY OF TERMS AND ABBREVIATIONS</b>	<b>4</b>
<b>1. GUIDANCE NOTES</b>	<b>5</b>
1.1 GENERAL	5
1.2 DIRECTIVE	5
1.3 THE SAFE ELECTRIC SCHEME	6
1.4 APPLICATION PROCESS	8
1.5 OUTCOME	11
1.6 TIMELINES	12
1.7 PAYMENT	12
<b>2. APPLICATION FORM</b>	<b>13</b>
2.1 CHECKLIST	13
2.2 PERSONAL DETAILS	13
2.3 PROOF YOU ARE QUALIFIED TO WORK IN THE COUNTRY OF YOUR QUALIFICATION(S)	14
2.4 PROFESSIONAL QUALIFICATIONS	15
2.5 WORK EXPERIENCE	17
2.6 ESSENTIAL LEARNING OUTCOMES/KEY UNDERSTANDINGS	17
<b>3. SUPPORTING DOCUMENTATION</b>	<b>19</b>
3.1 PROOF OF IDENTIFICATION	19
3.2 PROOF OF NATIONALITY	19
3.3 PROOF OF ELIGIBILITY TO PRACTICE	19
3.4 PROOF OF PROFESSIONAL QUALIFICATIONS	20
3.5 PROOF OF PROFESSIONAL WORK EXPERIENCE	21
APPENDIX 1 – PARTIAL ACCESS	22
APPENDIX 2 – TEMPORARY ACCESS (FREE PROVISION OF SERVICES)	23
APPENDIX 3 - EUROPEAN ECONOMIC AREA (EEA) COUNTRIES	25

## **Note to Applicants**

**This document should be read in conjunction with the below documents which are available on the CRU [website](#):**

- The Electrical Recognition Process for Eligible Persons under S.I. 8/2017- **Essential Learning Outcomes** of the Accepted Irish Professional Qualifications for entry to the Safe Electric Scheme
- Electrical Recognition Process **Application Form** (International Qualifications) for Eligible Persons under S.I. 8/2017– Registered Electrical Contractor (REC) Safe Electric Scheme

## Glossary of Terms and Abbreviations

Term	Definition or Meaning
<b>CRU</b>	Commission for Regulation of Utilities
<b>EEA</b>	European Economic Area
<b>ELO</b>	Essential Learning Outcome. This is a key understanding of accepted Irish qualifications. These Learning Outcomes are gained through work experience and / or qualifications. See Section 2.6
<b>Member State</b>	The Member States of the European Union. Please also note that references to 'Member State' in this document also include Iceland, Norway, Liechtenstein, and Switzerland
<b>NFQ</b>	National Framework of Qualifications
<b>Regulated Profession</b>	Professions to which access or practise in a Member State is, by law or regulation or administrative provision, conditional upon the possession of certain fixed professional qualification(s)
<b>Qualified Certifier (QC)</b>	The person appointed by a REC on a full-time basis to certify electrical works on behalf of the REC
<b>REC</b>	Registered Electrical Contractor
<b>ROI</b>	Republic of Ireland
<b>SSB</b>	Safety Supervisory Body
<b>The Directive</b>	European Recognition of Professional Qualifications Directive 2005/36/EC, as amended by the Directive 2013/55/EU
<b>The Panel</b>	The Panel of Experts who assess applications received through this process
<b>The scheme</b>	The Registered Electrical Contractor (REC) statutory regulatory scheme. Also known as the "Safe Electric" scheme

# 1. Guidance Notes

## 1.1 General

The Commission for Regulation of Utilities (CRU) is the Competent Authority for regulating electrical contractors in the Republic of Ireland (ROI). The CRU regulates the activities of electrical contractors with respect to safety. The CRU carries out this function through a statutory regulatory scheme, known as the Safe Electric scheme. The CRU's regulatory objective, with regard to the implementation and operation of the Safe Electric scheme ("the scheme"), is to protect the safety interests of customers, primarily in a domestic setting, with respect to electrical works.

The statutory registration scheme is fundamental to the delivery of quality and accountability in the provision of regulated electrical works in Ireland and ensures that members of the public availing of the services of RECs can be confident that they are properly regulated and qualified for the job.

Applicants who hold professional qualification(s) gained outside the ROI and wish to become a Qualified Certifier (QC) must first have their qualification(s) recognised by the CRU's Panel of Experts ("the Panel") before a valid application for registration can be made to join the scheme.

## 1.2 Directive

The European Recognition of Professional Qualifications Directive 2005/36/EC<sup>1</sup> ("the Directive"), as transposed into Irish law by S.I. 8 of 2017 European Union (Recognition of Professional Qualifications) Regulations 2017, obliges the CRU to put in place a system of recognition for **eligible persons** with relevant qualifications from outside of the Republic of Ireland applying to enable them to apply to become registered as a QC.

The Directive applies to qualifications which have been obtained/recognised in another Member State<sup>2</sup> (see Section 2.4 below).

---

<sup>1</sup> [Directive 2005/36/EC](#) of the European Parliament and of the Council, which was amended by the Directive [2013/55/EU](#)

<sup>2</sup> The 27 Member States of the European Union and Iceland, Norway and Liechtenstein. It must be noted that specific rules apply for Switzerland with regard to the recognition of professional qualifications.

This Guidance Note provides information to **eligible persons**, under the above legislation, who wish to have their qualifications recognised to become a Qualified Certifier in Ireland. If you are not an eligible person under the above legislation, a different process applies. Please refer to the CRU [website](#) for details on how you can apply.

The below table will allow you to confirm whether you are an eligible person under legislation along with the requirements for this process:

**Are you Eligible?**

- **Please see section 2.2 below.**

**AND**

- If you are an eligible person, do you meet one of the following requirements:
  - Did you obtain your professional qualification in a Member State other than Ireland?**OR**
  - Has a Member State other than Ireland certified that you have three years' professional experience in the profession concerned and your formal qualifications have been recognised in another Member State?

If you've answered yes to **both** of these questions, then you can apply for recognition through this process.

If you meet the requirements of an eligible person, the remainder of this document sets out how you can have your qualifications recognised and apply to the Safe Electric scheme. If you are not an eligible person under the above legislation, a different process applies. Please refer to the CRU [website](#) for details on how you can apply.

### **1.3 The Safe Electric Scheme**

The carrying out of specified electrical works is a *regulated profession* in the ROI, therefore, anyone carrying out these electrical works must work for a Registered Electrical Contractor (REC) who is registered with the Safe Electric scheme. Each REC must have a Qualified Certifier (QC) who must be registered as a QC with the REC. The QC will certify the electrical works undertaken by the REC. If you plan to work for a REC, but you do not wish to become a QC, you do not need to apply to the CRU to have your qualifications recognised.

The specified electrical works, which must be carried out by a REC and certified by the QC, are set out in legislation<sup>3</sup> and encompass most electrical works in a domestic setting. Undertaking electrical works outside of these works is not a regulated profession and therefore, you do not need to apply through this process to have your qualifications recognised.<sup>4</sup>

Examples of such works which are **not** restricted include:

- electrical works in potentially explosive atmospheres;
- electrical works in a commercial premises setting including MV and HV connection and installations;
- electrical works on a construction site;
- electrical works within exhibitions, shows and stands;
- electrical works on agricultural and horticultural installations;
- electrical works on public lighting and associated cabling;
- minor electrical works.

To carry out restricted electrical works without being a REC is a criminal offence. Therefore, it is necessary for anyone who gained a qualification outside of the ROI to ensure they work for a REC, register as a REC by employing a full-time QC or have their qualification(s) and work experience assessed and recognised before registering as a REC so that they can begin the process of becoming registered a **Qualified Certifier (QC)** for a REC.

The Electrical Criteria Document,<sup>5</sup> sets out how the Safe Electric scheme operates. The current qualification requirements for Applicants with an Irish qualification to **become appointed by a REC as their QC** are as follows:

---

<sup>3</sup> [S.I. No. 264/2013](#) - Electricity Regulation Act 1999 (Restricted Electrical Works) Regulations 2013.

<sup>4</sup> Further information is available on the Safe Electric website at: [Restricted & Controlled Electrical Works – Safe Electric](#)

<sup>5</sup> The Electrical Criteria Document is subject to amendment from time to time. The [Criteria Document Version 3](#) was published by the CRU on 22 April 2016.

a. The Electrical National/Advanced Craft Certificate Level 6 (NFQ<sup>6</sup>).

AND

b. City & Guilds Electrical Testing & Verification of Electrical Installations course or equivalent. (V&C course)

All QCs in the scheme are required to undergo the mandatory Verification & Certification course once every five years.

**If you hold a City & Guilds qualification such as Level 3 Diploma in Installing Electrotechnical Systems and Equipment (Buildings, Structures and the Environment) (C&G 2357) you may be able to apply directly to Safe Electric. Please contact Safe Electric at [electricalrecognition@safelectric.ie](mailto:electricalrecognition@safelectric.ie) if this applies to you.**

## 1.4 Application Process

Before commencing the application process, it is important to determine first if you are required to have your qualifications recognised through this process. You should, therefore, answer the following questions:

### **Will you be carrying out restricted electrical works in the ROI?**

- **If no**, then you do not need to apply to have your qualifications recognised as electrical works outside of restricted electrical works do not require registration with the Safe Electric scheme.
- **If yes:**
  - then you only need to apply to have your qualifications recognised if you wish to be a QC for a REC/become a REC and you wish to be the QC.
  - If you wish to work for an existing REC who has a QC, then you do not need to apply.

<sup>6</sup> The NFQ is a system of ten levels used to describe the Irish qualifications system. The NFQ is based on standards of knowledge, skill and competence and incorporates awards made for all kinds of learning. Directive 2005/36/EC of the European Parliament and of the Council.



- If you wish to register as a REC and employ a full-time QC, then you do not need to apply. You may apply directly to Safe Electric.
- If you wish to work in ROI on a temporary basis, then you do not need to apply through this process. A separate process is set out in Appendix 2.

If you wish to apply to be a QC for a REC, then you will need to apply to the CRU to have your qualifications recognised.

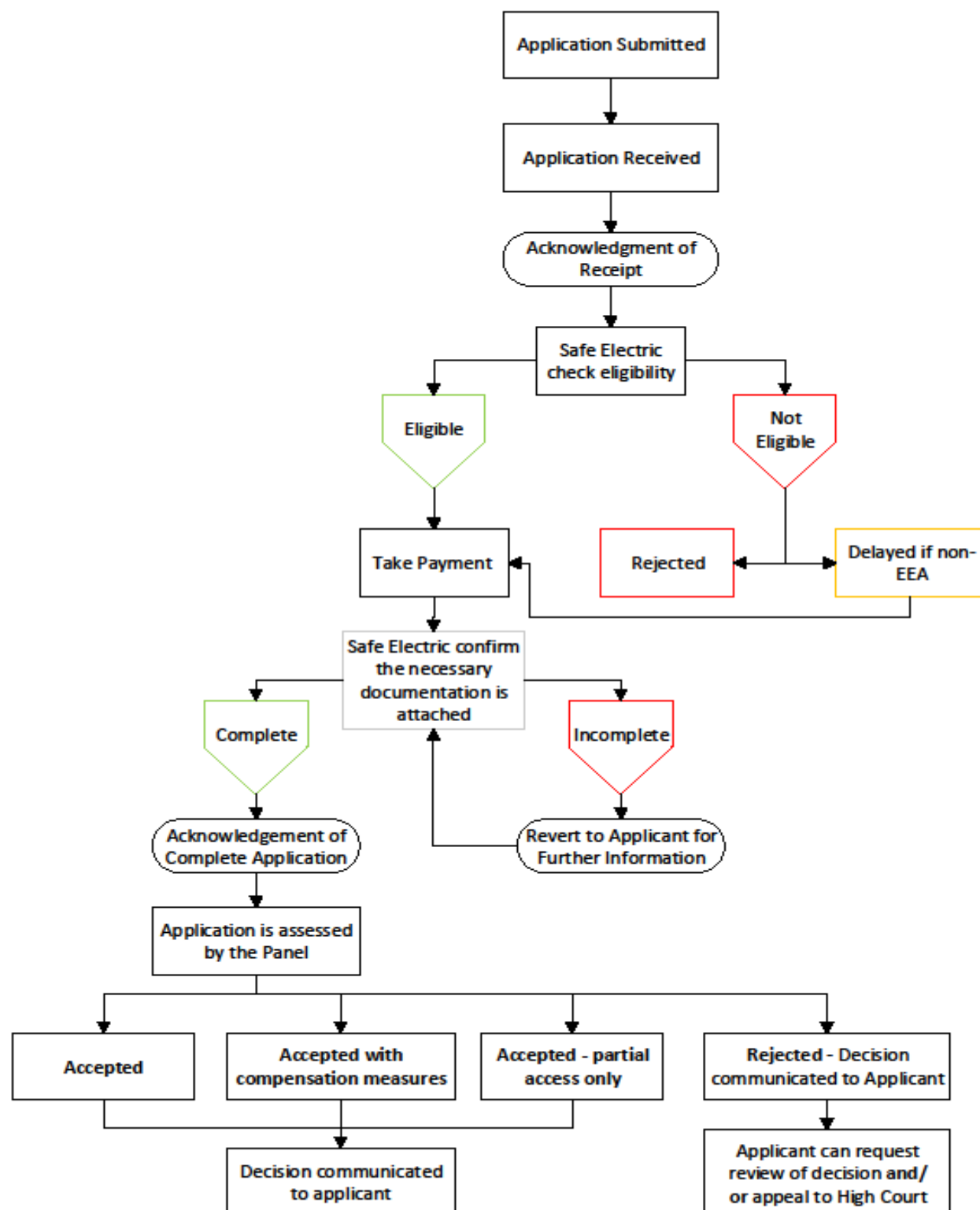
Applicants will be required to fill out the application form with the relevant details relating to their qualification(s) and professional experience. The electrical recognition process secretariat will ensure that all the relevant information/documentation has been submitted and that the fee has been paid. Your application will then be passed to the Panel of Experts for assessment. The Panel will review the applications and assess if Applicants have demonstrated an appropriate level of competence to become registered as a QC with the scheme.

The Panel will use the information provided by each Applicant and review their application against the list of Essential Learning Outcomes/Key Understandings of the relevant accepted Irish qualification(s). This is to enable the Panel to determine whether you are qualified for the same profession as Qualified Certifier in Ireland. After reviewing the application, the Panel may be satisfied that the Applicant has sufficiently demonstrated their competence and the Applicant may then apply to join the Safe Electric Scheme.

If there are any substantial differences (deficits) between the Applicant's qualification(s) and the Essential Learning Outcomes, the Panel will assess if the Applicant's training and professional work experience addresses these deficits, where such information has been provided.

The Panel will then decide if compensation measures need to be applied to bridge any remaining deficits, namely by providing the Applicant with a choice of completing an aptitude test in the form of an interview or completing an Adaptation Period. The compensation measures are defined and explained in more detail in Section 1.5. Partial Access will also be considered as an appropriate outcome if the gap is too large to be bridged by compensation measures (See Appendix 1).

## Electrical Recognition Process



## 1.5 Outcome

Based on the Panel's decision, the next step will be:

- **Recognise** the Applicant's qualifications/experience and they can proceed to apply to register with the scheme.
- Apply **compensation measures** – the Applicant selects one of the compensation measure options: individualised aptitude test in the form of an interview or undertake an Adaptation Period. Individuals can then apply to register with the scheme upon successful completion of the compensation measures.
- Grant **Partial Access** – If the deficits identified are too large to bridge with compensation measures and where the Applicant meets certain conditions. (See Appendix 1).
- **Reject** the application if the deficits identified are too large to bridge with compensation measures or Partial Access.

Once an outcome has been determined, Applicants will be contacted initially by the secretariat informing them of the decision and advising that a formal decision letter from the CRU will issue in due course.

Applicants will be entitled to request a review of the decision. This can be done through the High Court.

### ***Compensation Measures***

The potential **compensation measures** which the Applicant may choose are as follows:

- An Aptitude Test
- OR
- An Adaptation Period.

#### ***Aptitude Test***

The aptitude test will be an individualised assessment in the form of an interview, based on deficits identified by the Panel during their assessment of the application. The content and duration of the aptitude test will vary from one Applicant to another. This aptitude test will provide the Applicant with an opportunity to demonstrate their knowledge, which may not have been evident to the Panel from the application.

### *Adaptation Period*

The Adaptation Period will be a period of time where the Applicant will work under the supervision of a QC who will counter-sign certificates and be present for inspections. The Adaptation Period can last from 3 months to 3 years. It is the Applicant's responsibility to find a QC under whose supervision they can work for the Adaptation Period. It is envisaged that, in most cases, after this period of supervision, the Applicant will then be in a position to apply for full registration with the scheme. The supervising QC will provide a report at the conclusion of the Adaptation Period, setting out the Applicant's performance and progress throughout the period.

## **1.6 Timelines**

The CRU commits to the following timeline as set out in the Directive:

- **One month** to acknowledge the application.
- **One month** to contact the Applicant seeking additional information.
- A further **three months**, with a possible **one-month extension**, to reach a final decision on the application.

## **1.7 Payment**

Before requesting payment, the Safe Electric scheme administrator / secretariat will review your application to ensure it is complete. If required information is missing, you will be contacted to provide this. The secretariat will then contact you to arrange payment. Your application cannot be processed until payment has been received (€250). The processing timeline commences once payment has been received.

## 2. Application Form

### **Please read these notes before completing the application form**

#### 2.1 Checklist

Please read through the checklist, which is included with the application form (*See page 2 of the application form*). This checklist may be used as a to-do list to help guide you through your application. It outlines the information/documentation that you will need to provide as part of your application. Once the application has been completed, this section should be used to confirm that you have provided the required information and any additional information which you have chosen to provide.

Please note, each item on the checklist may be adjusted to your individual situation. For example, the number of certificates submitted will depend on how many qualifications you wish to provide.

Please note that we may contact the competent authority or any other relevant body in the appropriate Member State if you are unable to provide information or to verify information.

It should be noted that many items are not mandatory and need only be supplied where the Applicant wishes to do so for the purposes of demonstrating their competence.

#### 2.2 Personal Details

This document applies only to Applicants who fall within the definition of an ‘eligible person’ under S.I. No. 8/2017 – European Union (Recognition of Professional Qualifications) Regulations 2017. These Regulations set out certain requirements for the processing of applications. If you do not meet the definition of an ‘eligible person’, you may apply through the process for non-eligible persons. Details of this process are available on the CRU [website](#).

You are an **‘eligible person’** if you fall into one of the following categories:

- You are a European Economic Area (EEA)<sup>7</sup> national;
- You are a Swiss national;
- You have refugee or other protected status in an EEA country or Switzerland; or

<sup>7</sup> The 27 Member States of the European Union and Iceland, Norway, Liechtenstein, and Switzerland.

- You have a spouse, dependant child under the age of 21, or a dependant (grand)parent or (grand)parent-in-law who is a national of the EEA or Switzerland, has **and** you have the right to residence or permanent residence in an EEA country or Switzerland.

You must provide supporting documentation to prove you are an eligible person (see 3.1 and 3.2).

## **Contact Details**

Please provide your personal/direct phone number and an email address so that the Secretariat can contact you. You may be contacted with a request for clarifications and/or to arrange payment for your application.

If details are missing from your application, this may result in delays or if we do not hear from you, after some time you will be notified that your application will be closed unless information is received. If you later provide the information required, your file can be reopened but you may need to resubmit documentation already provided, if your file has been deleted under the relevant Data Protection policy. We may also contact relevant authorities in the appropriate Member State to obtain additional information and verify information submitted.

## **2.3 Proof you are Qualified to Work in the Country of your Qualification(s)**

Please note that submission of the following is **mandatory**:

- copies of the attestation(s) of professional competence or of the evidence of formal qualifications giving access to the profession; and
- an attestation of the professional experience, where applicable.

If the electrical works industry is **regulated** in your Member State, you must submit an Attestation of Competence<sup>8</sup> or evidence of formal qualifications, required by another Member State. Please see Appendix 3 for a list of regulated countries and the relevant Competent Authority.

---

<sup>8</sup> An Attestation of Competence can be a specific examination without prior training, or full-time pursuit of the profession in a Member State for three consecutive years or for an equivalent duration on a part-time basis during the previous 10 years.

If the electrical works industry is **not regulated** in the country which you gained the professional qualification and/or Member State of nationality, you will need to provide evidence that you pursued the activity on a full time basis for one year or for an equivalent overall duration on a part-time basis during the previous 10 years in another Member State which does not regulate that profession **AND** evidence of qualifications or one of more Attestation(s) of Competence. This information should be provided in Section 3 of the application form. The requirement of one year professional experience can be waived if the education is regulated in the home Member State.

Please note that we may contact the Competent Authority or relevant authorities in the relevant Member State to verify information provided or to gain additional information for the purposes of assessing your application.

## **2.4 Professional Qualifications**

You may provide evidence of your relevant professional qualification(s), if you wish to do so. If you have multiple relevant professional qualifications, please expand the relevant section of the application form, as required. You may include expired qualifications to be assessed.

As an **eligible person** who has met the requirements for this process, your qualification(s) will fall in to one of the following categories:

- Your qualification(s) have been **obtained** in one of the Member State countries. or
- Your qualification(s) have been **recognised** by one of the Member State countries **and** that Member State has **certified** that you have three years professional experience as a Qualified Certifier in that Member State.

If the above does not apply to your qualification(s), the Directive does not apply to your application and you must apply through the process for non-eligible persons. Details of this process are available on the CRU [website](#).

You must be qualified to carry out the profession of Qualified Certifier in another Member State. You must provide the following information:

- Evidence of qualifications or Attestation of Competence<sup>9</sup>, if your home Member State regulates the profession; or

---

<sup>9</sup> An Attestation of Competence can be a specific examination without prior training, or full-time pursuit of the profession in a Member State for three consecutive years or for an equivalent duration on a part-time basis during the previous 10 years.

- Evidence that you pursued the activity on a full time basis for one year or for an equivalent overall duration on a part-time basis during the previous 10 years in another Member State which does not regulate that profession AND evidence of qualifications or one of more Attestation(s) of competence, if the Member State does not regulate the profession. The requirement of one year professional experience does not apply if the education is regulated in the home Member State.

Please note that we may contact the Competent Authority or relevant authorities in the relevant Member State to verify information provided or to gain additional information for the purposes of assessing your qualification or Attestation of Competence.<sup>10</sup>

If you do not provide this documentation or this information cannot be ascertained from the relevant authority, after providing you with opportunities to provide the information, you will be notified that your application will be closed unless information is received. If you later provide the information required, your file can be reopened but you may need to resubmit documentation already provided, if your file has been deleted under the relevant Data Protection policy.

Your relevant qualification(s) will be compiled and compared against the Essential Learning Outcomes of the relevant accepted Irish qualification(s). The Panel will then decide if the profession you are qualified for is the same as the profession of Qualified Certifier in Ireland.

Qualifications that are relevant to the Qualified Certifier profession in the Safe Electric scheme:

- Electrical qualification(s)  
and/or
- Qualification(s) which have qualified you to practise as an electrician in the Member State where it was obtained/recognised.

You may provide additional information such as additional or expired qualifications to be assessed, if you wish to do so. If you have any combination of the above qualifications, you should include them in your application (including expired qualifications), if required.

---

<sup>10</sup> An Attestation of Competence can be a specific examination without prior training, or full-time pursuit of the profession in a Member State for three consecutive years or for an equivalent duration on a part-time basis during the previous 10 years.



There are two types of tables in the application form to set out your qualifications, should you choose to do so:

- Use the **Type A** table for longer courses (1 or more years) such as apprenticeship qualifications.
- Use the **Type B** table for any shorter (less than one year) relevant qualifications. You may expand the tables as necessary to include all information which you wish the Panel to assess.

## 2.5 Work Experience

You may also have skills that have been gained through your professional experience which you would like the Panel of Experts to consider. Please provide your professional history to allow the Panel to identify any Essential Learning Outcomes/Key Understandings gained through work experience. Please demonstrate an appropriate level of competence by describing your main duties and specific examples of the works you have undertaken. This can assist the Panel to determine if you are qualified to carry out the same role as Qualified Certifier in Ireland.

You may wish to include the following:

- i. other relevant supporting documentation, such as certificates of completed works, testimonies from customers, etc. if applicable.
- ii. A current curriculum vitae (CV) setting out the chronology of work.

Information on professional experience outside of the Attestation of Competence, are optional. They are suggested in order to avoid requests for clarification or limit compensatory measures.

## 2.6 Essential Learning Outcomes/Key Understandings

Please ensure that you read the Essential Learning Outcomes/Key Understandings document.

All applications to the electrical recognition process will be assessed against the Learning Outcomes/Key Understandings of the accepted Irish qualifications. This is to enable the Panel to determine if you are qualified to carry out the same role as Qualified Certifier in Ireland.

Sections 5 and 6 of the application form provide you with an opportunity to demonstrate to the Expert Panel that you meet the Learning Outcomes/Key Understandings. You may complete these with information you feel is relevant to the learning outcomes.

If possible, please outline, where in your qualification(s), you have gained the relevant learning outcomes, if applicable. You may also provide examples of work experience where you practised and used the relevant skill(s).

The above is optional and is requested to enable the Panel to clearly identify whether your application can be accepted or whether any substantial differences (deficits) between your qualification(s) and the Learning Outcomes/Key Understandings, your relevant work experience are present. If substantial deficits are identified, the Panel will then be able to use this information to determine whether compensation measures or subsequently Partial Access could be recommended.

**You may include this information in Section 7.1 of the Application Form.**

If you do not have experience for a particular learning outcome (or part thereof) or are unsure where your experience fits against the Essential Learning Outcomes/Key Understandings, please state this in the allocated space on the application form. This will ensure your application continues to progress quickly and enable the Panel to quickly identify deficits and how these can be addressed.

## 3. Supporting Documentation

### Translations

If the documentation is not in English, please also provide a translation, along with a copy of the documents. This translation does not need to be certified.

### 3.1 Proof of Identification

Please supply one of the following as proof of identification:

- **Passport:** include a copy of the front page and the photo page;
- **National photo ID card:** include a copy of both sides of the card/document;
- **Photo driving licence:** include a copy of both sides of the card/document.

### 3.2 Proof of Nationality

Please supply one of the following:

- **Passport:** include a copy of the front page and the photo page;
- **National photo ID card:** include a copy of both sides of the card/document;
- **Birth certificate:** please ensure the photocopy does not cut off any information.

To be considered an 'eligible person' under the Directive, if you are not a national of a Member State (listed in Appendix 3), you must belong to one of the following categories:

- **Refugee or other protected status:** must supply proof of such i.e. Convention Travel Document from an EEA member state or Switzerland
- **Family member and right of residence in the state:** the Applicant must supply proof of both i.e. a birth or marriage certificate and proof of residency.

You must be an 'eligible person' to apply through this process. If you are not an eligible person, please visit the CRU [website](#) to obtain information on the application process for non-eligible persons.

### 3.3 Proof of Eligibility to Practice

If the electrical works industry is regulated in the country in which you gained the professional qualification and/or Member State of nationality, you may wish to provide evidence of being registered with the Competent Authority in your Member State. This may be done by supplying a:

- **Letter of Registration or ID card**
- **Confirmation from the Competent Authority / Regulatory Body**

This information can be supplied at Section 4 of the Application Form.

**Note: This is optional.** If submitting the documentation and it is not in English, you may supply a copy of the original **and** a version translated into English.

Please note that we may contact the Competent Authority or other relevant authorities in the relevant Member State to verify information provided or to gain additional information for the purposes of assessing your qualification or Attestation of Competence.<sup>11</sup>

### **3.4 Proof of Professional Qualifications**

You must provide the following as proof of professional qualifications:

- Evidence of qualifications or Attestation of Competence<sup>12</sup> if your home Member State **regulates** the profession; or
- Evidence that you pursued the activity on a full time basis for one year or for an equivalent overall duration on a part-time basis during the previous 10 years in another Member State which does not regulate that profession AND evidence of qualifications or one of more Attestation(s) of competence if the Member State does **not regulate** the profession. The requirement of one year professional experience does not apply if the education is regulated in the home Member State. The requirement of one year professional experience can be waived if the education is regulated in the home Member State.

In addition, you may choose to provide the following to assist the Panel in completing their assessment:

- **Professional Qualification:** Certificate(s) from the institution(s) or training provider(s) can be accepted. Certificate(s) are the final award given proving the course/training

---

<sup>11</sup> An Attestation of Competence can be a specific examination without prior training, or full-time pursuit of the profession in a Member State for three consecutive years or for an equivalent duration on a part-time basis during the previous 10 years.

<sup>12</sup> An Attestation of Competence can be a specific examination without prior training, or full-time pursuit of the profession in a Member State for three consecutive years or for an equivalent duration on a part-time basis during the previous 10 years.

has been completed. You may include expired qualifications to be assessed by the Panel.

- **Official Transcripts:** transcripts of the course listing modules taken may be provided to assist the Panel in assessing your application. It is not necessary to include the results of each module.

If you have other documentation setting out your professional qualifications, you may submit these as part of your application.

Please provide proof of each professional qualification that you have listed in Section 5 of the application form. The CRU may contact the awarding authority to verify your qualifications.

If the documentation is not in English, please submit a copy of the original **and** a version translated into English.

### **3.5 Proof of Professional Work Experience**

You may also wish to provide proof of your professional experience. This can be done, for example, by supplying an employment reference(s) for an employer you list in Section 6 of your application:

- **Written reference from employer:** reference confirming that you have completed the tasks listed in your application.

**Note:** References should be written on headed paper/email by a named person and include their phone number and/or email address. If you are unable to provide written references, but would still like the CRU to seek references, if necessary, please provide the contact details for your former employers. The CRU may contact these employers to verify your work experience and to seek additional details, as necessary.

**Should you have any questions about completing your application form, please contact Safe Electric by [email@electricalrecognition@safelectric.ie](mailto:email@electricalrecognition@safelectric.ie)**

## **Appendix 1 – Partial Access**

The CRU shall grant Partial Access on a case-by-case basis, when all the following conditions are fulfilled:

- i. The Applicant is fully qualified to exercise as the equivalent of an QC in their home Member State.
- ii. Differences between the activities of a QC exercised in an Applicant's home Member State, and the Safe Electric Scheme as such are so large that the application of compensation measures would amount to requiring the Applicant to complete the full apprenticeship programme in Ireland to have full access to the scheme.
- iii. The certification activities required of the Applicant can be pursued with the cooperation of an existing QC.

It is envisaged that Partial Access would apply where an Applicant demonstrates competence in one or more, but not all, areas that would be required of a QC. Given that the Safe Electric scheme relates to limited specified electrical works, primarily in a domestic setting, there is no option to provide an Applicant with registration to the schemes to carry out some restricted electrical works but not others, on the grounds of safety due to the fact that some works may impact or require testing of other areas of the electrics in the home. Therefore, where deficits cannot be bridged by compensation measures, the Panel would consider whether the Applicant could be provided with an option to work with a REC, who has a QC in place, to enable them to carry out works in areas where they are competent to do so. The QC could then review and certify the work, having regard to the impacts of the work on other areas of the home.

## **Appendix 2 – Temporary Access (Free Provision of Services)**

For Qualified Certifiers legally established in another Member State for the purpose of pursuing the same profession there and who wish to provide temporary services in Ireland, to carry out restricted works, contractors should first consult [CER/16/001 - Electrical Safety Supervisory Criteria Document \(Version 3.0\)](#) to determine whether ‘specialist contractor’ or ‘associate contractor’ may be most appropriate.

If, however, the above do not apply, contractors may contact the Safe Electric scheme with a declaration. A **written declaration** must be submitted by the Service Provider to Safe Electric in advance of carrying out any services, or where there has been a material change to information previously submitted with a written declaration. The written declaration should contain the following information:

- Proof of nationality;
- Your address in the Member State of establishment.
- An attestation certifying that you are legally established in a Member State for the purpose of pursuing the activities concerned and that you are not prohibited from practicing, even temporarily, at the moment of delivering the attestation;
- evidence of your professional qualifications;
- any means of proof that you have pursued the activity concerned for at least one year during the previous 10 years. The condition of one year’s pursuit shall not apply if the profession or the education and training leading to the profession is regulated.
- where you move, if you have pursued that profession in one or several Member States for at least one year during the last 10 years preceding the provision of services when the profession is not regulated in the Member State of establishment. The condition of one year’s pursuit shall not apply if the profession or the education and training leading to the profession is regulated.
- a certificate concerning the nature and duration of the activity issued by the competent authority or body of the Member State where the service provider is established, if applicable;
- The register in which you are registered and your registration number or equivalent means of identification contained in that register, if you are registered in a commercial register or similar public register;

- If the activity is subject to authorisation in your Member State of establishment, the name and address of the competent supervisory authority;
- Any professional association or similar body with which you are registered;
- Your professional title or, where no such title exists, your formal qualification and the Member State in which it was awarded.;
- If the activity is subject to VAT, your VAT identification number;
- Details of any insurance cover or other means of personal or collective protection with regard to professional liability.

The above declaration will be valid for one year during which you intend to provide temporary or occasional services in the Republic of Ireland. Such declaration shall be renewed if you intend to provide temporary or occasional services in a subsequent year or, at any time, if there is a material change to any of the information provided in a previous declaration.

The Temporary Access Declaration can be submitted in any form to [electricalrecognition@safeelectric.ie](mailto:electricalrecognition@safeelectric.ie) or a form is available on request.

No later than one month after receipt of the declaration and accompanying documents, referred to above, you will be informed of the decision:

- (a) not to check your professional qualifications;
- (b) having checked your professional qualifications:
  - (i) to require you to take an aptitude test; or
  - (ii) to allow the provision of services.

Please note that we may ask the relevant competent authority information about professional qualifications and disciplinary matters relating to you.

You will be subject to the same rules of registration and statutory requirements as QCs while providing your services in Ireland. This will include an inspection on work completed by Safe Electric. A fee will be charged for these inspections.



## Appendix 3 - European Economic Area (EEA) Countries

Country	Regulated Y/N	Relevant Competent Authority
Austria	N	
Belgium	N	
Bulgaria	N	
Croatia	N	
Cyprus	N	
Czechia	N	
Denmark	Y	Sikkerhedsstyrelsen – Danish Safety Technology Authority
Estonia	N	
Finland	N	
France	Y	Chambre de Métiers et de l'Artisanat – Chamber of Trade and Crafts
Germany	Y	Handwerkskammern – Chamber of Trade
Greece	Y	National Organisation for the Certification of Qualifications & Vocational Guidance
Hungary	Y	Government Office of Pest County
Iceland	Y	Ministries of Industries and Innovation
Ireland	Y	Commission for Regulation of Utilities
Italy	Y	Directorate-General for Market, Competition, Consumer Affairs, Surveillance and Technical Regulation
Latvia	Y	Specialized Certification Centre of Latvian Association of Power Engineers and Energy Constructors
Liechtenstein	N	
Lithuania	N	
Luxembourg	Y	Ministere de l'Economie, Direction Generale PME et Entrepreneuriat – Ministry of the Economy
Malta	Y	Regulator for Energy and Water Services
Norway	Y	Directorate for Civil Protection and Emergency Planning
Poland	Y	National Board of Polish Chamber of Construction Engineers
Portugal	Y	Directorate-General for Energy and Geology
Romania	N	
Slovakia	Y	National Labour Inspectorate
Slovenia	N	
Spain	N	
Sweden	N	
Switzerland	Y	Federal Inspectorate for Heavy Current Installations ESTI

The Netherlands	N	
-----------------	---	--