



An Coimisiún
um Rialáil Fónais
**Commission for
Regulation of Utilities**

An Coimisiún um Rialáil Fónais
Commission for Regulation of Utilities

Guidance Notes for the Gas Recognition Process for International Qualifications for Eligible Persons under S.I. 8/2017 – RGI Scheme

Table of Contents

Table of Contents	2
Supporting CRU Documentation	3
Glossary of Terms and Abbreviations.....	4
1 Guidance Notes	5
1.1 General.....	5
1.2 Directive	5
1.3 The RGI Scheme.....	6
1.4 Application Process	7
1.5 Outcome.....	9
1.6 Timelines	10
1.7 Payment	10
2 Application Form	11
2.1 Checklist.....	11
2.2 Personal Details	11
2.3 Proof you are Qualified to Work in the Country of your Qualification(s).....	12
2.4 Professional Qualifications.....	13
2.5 Work Experience	15
2.6 Essential Learning Outcomes/Key Understandings	15
3 Supporting Documentation.....	17
3.1 Proof of Identification	17
3.2 Proof of Nationality	17
3.3 Proof of Eligibility to Practice	17
3.4 Proof of Professional Qualifications	18
3.5 Proof of Professional Work Experience.....	19
Appendix 1 – Partial Access	20
Appendix 2 – Temporary Access	21
Appendix 3 - European Economic Area (EEA) Countries	23

Supporting CRU Documentation

This document should be read in conjunction with the below:

- Gas Recognition Process Application Form (International Qualifications) for Eligible Persons under S.I. 8/2017
- Essential Learning Outcomes / Key Understandings of the Accepted Irish Professional Qualifications for entry to the RGI Scheme. Information for Eligible Persons under S.I. 8/2017

Glossary of Terms and Abbreviations

Term	Definition or Meaning
CRU	Commission for Regulation of Utilities
EEA	European Economic Area
ELO	Essential Learning Outcome is a key understanding of accepted Irish qualifications. These Learning Outcomes are gained through work experience and / or qualifications. See Section 2.6
GSSB	Gas Safety Supervisory Body
Member State	The 27 Member States of the European Union. Please note that references to 'Member State' in this document also include Iceland, Norway, Liechtenstein, and Switzerland
NFQ	National Framework of Qualifications
Regulated Profession	Professions to which access or practise in a Member State is, by law or regulation or administrative provision, conditional upon the possession of certain fixed professional qualification(s)
RGI	Registered Gas Installer
ROI	Republic of Ireland
SSB	Safety Supervisory Body
The Directive	European Recognition of Professional Qualifications Directive 2005/36/EC which was amended by the Directive 2013/55/EU
The Panel	The Panel of Experts who assess applications received through this process
The scheme	The Registered Gas Installer (RGI) statutory regulatory scheme. Also known as the RGI scheme.

1 Guidance Notes

1.1 General

The Commission for Regulation of Utilities (CRU) is the Competent Authority for regulating gas installers in the Republic of Ireland (ROI). The CRU regulates the activities of gas installers with respect to safety. The CRU carries out this function through the Registered Gas Installer (RGI) statutory regulatory scheme. The CRU's regulatory objective, with regard to the implementation and operation of the RGI scheme ("the scheme"), is to protect the safety interests of customers with respect to gas works, currently in domestic settings only¹.

The statutory registration scheme is fundamental to the delivery of quality and accountability in the provision of regulated gas works in Ireland and ensures that members of the public availing of the services of RGIs can be confident that they are properly regulated and qualified for the job.

All Applicants who hold professional qualification(s) gained outside the ROI wishing to undertake Gas Works in the ROI must first have their qualification(s) recognised by the CRU's Panel of Experts ("the Panel") before a valid application for registration can be made to join the scheme.

1.2 Directive

The European Recognition of Professional Qualifications Directive 2005/36/EC ("the Directive"), as transposed into Irish law by S.I. 8 of 2017 European Union (Recognition of Professional Qualifications) Regulations 2017, obliges the CRU to put in place a system of recognition for eligible persons with relevant qualifications from outside of the Republic of Ireland applying for registration to the scheme to become an RGI. The Directive applies to qualifications which have been obtained/recognised in another Member State² (see Section 2.4 below).

This Guidance Note provides information to **eligible persons**, under the above legislation, who wish to have their qualifications recognised to become a Qualified Certifier.. If you are not an eligible person under the above legislation, a different process applies. Please refer to the CRU [website](#) for details on how you can apply.

¹ Please see Regulation 4 of [S.I. 225/2009 - Electricity Regulation Act 1999 \(Gas Works\) Regulations 2009](#) and [S.I. No. 299/2011 Electricity Regulation Act 1999 \(Liquefied Petroleum Gas Works\) Regulations 2011](#) for further information.

² The 27 Member States of the European Union and Iceland, Norway and Liechtenstein. It must be noted that specific rules apply for Switzerland with regard to the recognition of professional qualifications.

Before continuing, please confirm whether you are an ‘eligible person’ and meet the necessary requirements under legislation:

Are you Eligible?

- Please see section 2.2 below.

AND

- If you are an eligible person, do you meet one of the following requirements:
 - Did you obtain your professional qualification in a Member State other than Ireland?
 - OR**
 - Has a Member State other than Ireland certified that you have three years’ professional experience in the profession concerned and your formal qualifications have been recognised in another Member State?

If you’ve answered yes to **both** of these questions, then you can apply for recognition through this process.

If you meet the requirements of an eligible person, the remainder of this document sets out how you can have your qualifications recognised and apply to the RGI scheme.

1.3 The RGI Scheme

Domestic Gas Works is a *regulated profession* in the ROI. Therefore, anyone carrying out domestic Gas Works must be registered with the RGI Scheme and must meet certain minimum requirements.

To carry out domestic Gas Works without being an RGI is a criminal offence. Therefore, it is necessary for anyone who gained a qualification outside of the ROI, wishing to undertake gas works, to have their qualification(s) and work experience assessed and recognised before they can register to become an RGI.

The Gas Criteria Document,³ sets out how the RGI scheme operates. The current qualification requirements to become an RGI are as follows:

³ The Gas Criteria Document is subject to amendment from time to time. The [Gas Safety Supervisory Criteria Document Version 1.7](#) was published by the CRU on 13th August 2020 .

- a. An Advanced Craft Certificate in Gas Fitting, Electrical, Plumbing, or Refrigeration Level 6 (NFQ⁴).
- AND
- b. A Domestic Gas Safety (DGS) award or equivalent.

All RGIs are also required to undergo the mandatory DGA course every five years.

1.4 Application Process

Applicants will be required to fill out the application form with the relevant details relating to their qualification(s) and professional experience. The gas recognition process secretariat will ensure that all the relevant information/documentation has been submitted and that the fee has been paid. Your application will then be passed to the Panel of Experts for assessment. The Panel will review the applications and assess if Applicants have demonstrated an appropriate level of competence to become eligible to register with the scheme.

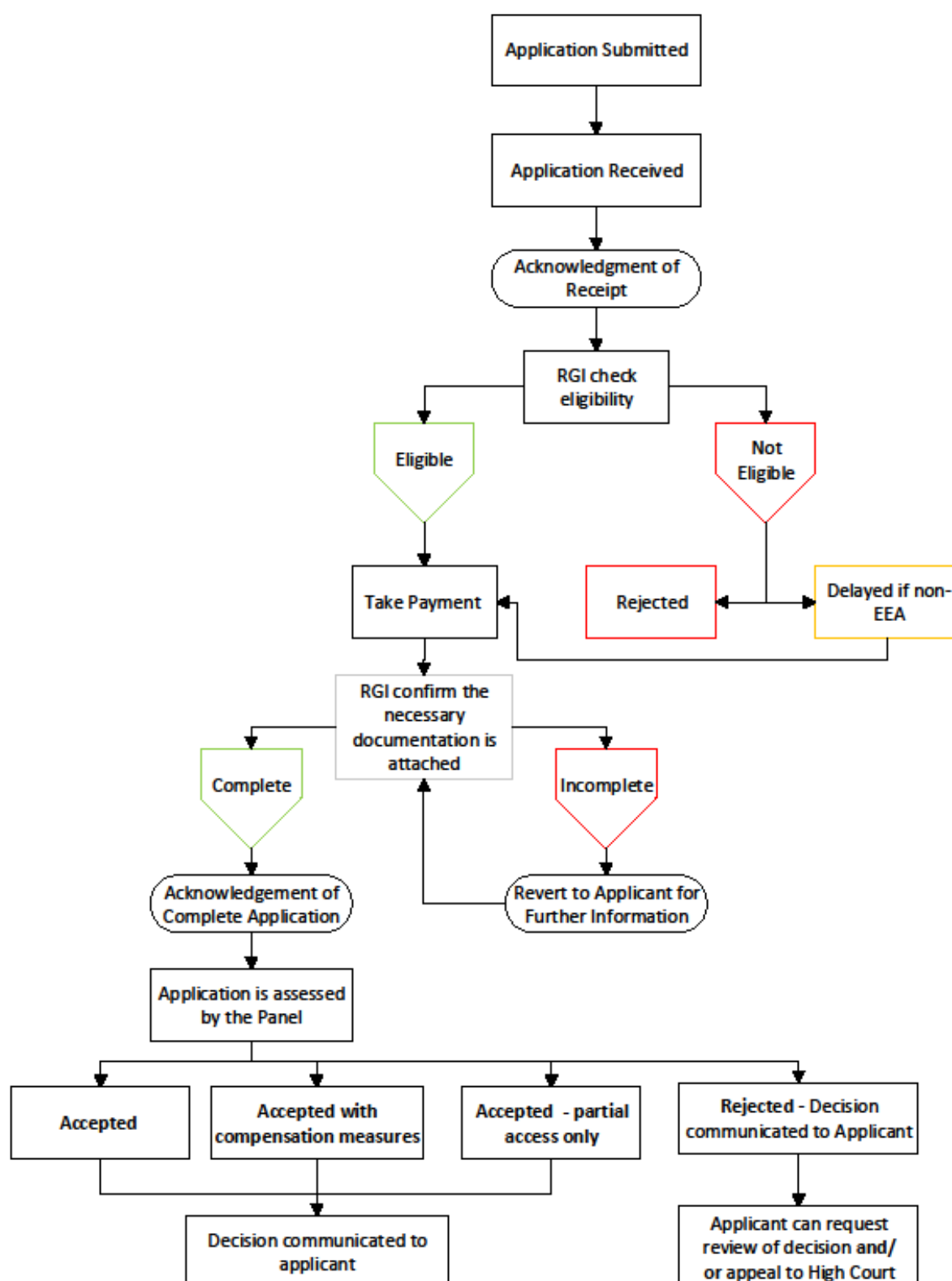
The Panel will use the information provided by each Applicant and review their application against the list of Essential Learning Outcomes/Key Understandings of the relevant accepted Irish qualification(s). This is to enable the Panel to determine whether you are qualified for the same profession as gas installer in Ireland. After reviewing the application, the Panel may be satisfied that the Applicant has sufficiently demonstrated their competence and the Applicant may then apply to join the RGI Scheme.

If there are any substantial differences (deficits) between the Applicant's qualification(s) and the Essential Learning Outcomes/Key Understandings, the Panel will assess if the Applicant's professional work experience addresses these deficits, where it has been provided.

The Panel will then decide if compensation measures need to be applied to bridge any remaining deficits, namely by providing the Applicant with a choice of completing an aptitude test in the form of an interview or completing an Adaptation Period. The compensation measures are defined and explained in more detail in Section 1.5 of these Guidance Notes. Partial Access will also be considered as an appropriate outcome if the gap is too large to bridge with compensation measures (See Appendix 1).

⁴ The NFQ is a system of ten levels used to describe the Irish qualifications system. The NFQ is based on standards of knowledge, skill and competence and incorporates awards made for all kinds of learning. 4 Directive 2005/36/EC of the European Parliament and of the Council.

1.4.1 Gas Recognition Process



1.5 Outcome

Based on the Panel's decision, the next step will be to:

- **Recognise** the Applicant's qualifications/experience and they can proceed to apply to register with the scheme.
- Apply **compensation measures** – the Applicant selects one of the compensation measure options: individualised aptitude test in the form of an interview or undertake an Adaptation Period. Individuals can then apply to register with the scheme upon successful completion of the compensation measures.
- Grant **Partial Access** – If the deficits identified are too large to bridge with compensation measures and where the Applicant meets certain conditions. (See Appendix 1).
- **Reject** the application if the deficits identified are too large to bridge with compensation measures or Partial Access.

Once an outcome has been determined, Applicants will be contacted initially by the secretariat informing them of the decision and advising that a formal decision letter from the CRU will be issued in due course.

Applicants will be entitled to request a review of the decision. This can be done through the High Court.

Compensation Measures

The potential **compensation measures** which the Applicant can choose are as follows:

- An Aptitude Test
- OR
- An Adaptation Period.

Aptitude Test

The aptitude test will be an individualised assessment in the form of an interview, based on deficits identified by the Panel during their assessment of the application. The content and duration of the aptitude test will vary from one Applicant to another. This aptitude test will provide the Applicant with an opportunity to demonstrate their knowledge, which may not have been evident to the Panel from the application.

Adaptation Period

The Adaptation Period will be a period of time where the Applicant will work under the supervision of an RGI who will counter-sign certificates and be present for inspections. The Adaptation Period can last from 3 months to 3 years. It is the Applicant's responsibility to find an RGI under whose supervision they can work for the Adaptation Period. It is envisaged that, in most cases, after this period of supervision, the Applicant will then be in a position to apply for full registration with the scheme. The supervising RGI will provide a report at the conclusion of the Adaptation Period, setting out the Applicant's performance and progress throughout the period.

1.6 Timelines

The CRU commits to the following timeline as set out in the Directive:

- **One month** to acknowledge the application.
- **One month** to contact the Applicant seeking additional information;
- A further **three months**, with a possible **one-month extension**, to reach a final decision on the application.

1.7 Payment

Before requesting payment, the RGI scheme administrator / secretariat will review your application to ensure it is complete. If information is missing, you will be contacted and asked to provide this. The secretariat will then contact you to arrange payment. Your application cannot be processed until payment has been received (€250). The processing timeline commences once payment has been received.

2 Application Form

Please read these notes before completing the application form

2.1 Checklist

Please read through the checklist, which is included with the application form (*See page 2 of the application form*). This checklist may be used as a to-do list to help guide you through your application. It outlines the information/documentation that you will need to provide as part of your application. Once the application has been completed, this section should be used to confirm you have provided the required information and any additional information which you have chosen to provide.

Please note, each item on the checklist may be adjusted to your individual situation. For example, the number of certificates submitted will depend on how many qualifications you have put forward to be assessed, etc.

It should be noted that many items are not mandatory and need only be supplied where the Applicant wishes to do so for the purposes of demonstrating their competence.

2.2 Personal Details

This document only applies to 'eligible person' under S.I. No. 8/2017 – European Union (Recognition of Professional Qualifications) Regulations 2017. These Regulations set out certain requirements for the processing of applications. If you do not meet the definition of an 'eligible person', you may apply through the process for non-eligible persons. Details of this process are available on the CRU [website](#).

You are an **'eligible person'** if you fall into one of the following categories:

- You are a European Economic Area (EEA)⁵ national;
- You are a Swiss national;
- You have refugee or other protected status in an EEA country or Switzerland; or
- You have a spouse, dependant child under the age of 21, or a dependant (grand)parent or (grand)parent-in-law who is a national of the EEA or Switzerland, has **and** you have the right to residence or permanent residence in an EEA country or Switzerland.

⁵ The 27 Member States of the European Union and Iceland, Norway, Liechtenstein, and Switzerland.

You must provide supporting documentation to prove you are an eligible person (see 3.1 and 3.2).

Contact Details

Please provide your personal/direct phone number and an email address so that the secretariat can contact you. You may be contacted with a request for clarifications and/or to arrange payment.

If details are missing from your application, this may result in delays or if we do not hear from you, after some time you will be notified that your application will be closed unless information is received. If you later provide the information required, your file can be reopened but you may need to resubmit documentation already provided, if your file has been deleted under the relevant Data Protection policy. We may also contact relevant authorities in the appropriate Member State to obtain additional information and verify information submitted.

2.3 Proof you are Qualified to Work in the Country of your Qualification(s)

Please note that submission of the following is mandatory:

- copies of the attestations of professional competence or of the evidence of formal qualifications giving access to the profession; and
- an attestation of the professional experience, where applicable.

The additional information requested is optional and may be provided for the Panel of Experts to assess as part of your application.

If gas works is **regulated** in your Member State, you must submit an Attestation of Competence⁶ or evidence of formal qualifications, required by another Member State. Please see Appendix 3 for a list of regulated countries and the relevant Competent Authority.

If gas works is not regulated in the country which you gained the professional qualification and/or Member State of nationality, you will need to provide evidence that you pursued the activity on a full time basis for one year or for an equivalent overall duration on a part-time basis during the previous 10 years in another Member State which does not regulate that

⁶ An Attestation of Competence can be a specific examination without prior training, or full-time pursuit of the profession in a Member State for three consecutive years or for an equivalent duration on a part-time basis during the previous 10 years.

profession AND evidence of qualifications or one of more Attestation(s) of Competence, if the Member State does not regulate the profession. This information should be provided in Section 5 of the application form. The requirement of one year professional experience can be waived if the education is regulated in the home Member State.

Please note that we may contact the Competent Authority or relevant authorities in the relevant Member State to verify information provided or to gain additional information for the purposes of assessing your application.

2.4 Professional Qualifications

As an eligible person, your qualification(s) will fall within to one of the following categories:

- Your qualification(s) have been **obtained** in one of the Member State countries.
- Your qualification(s) have been **recognised** by one of the Member State countries **and** that Member State has **certified** that you have three years professional experience as a Qualified Certifier in that Member State.

If the above does not apply to your qualification(s), the Directive does not apply to your application you must apply through the process for non-eligible persons. Details of this process are available on the CRU [website](#).

You must be qualified to carry out the profession of Gas Installer in another Member State. As set out in section 2.3 of this document, you must provide the following information:

- Evidence of qualifications or Attestation of Competence⁷ if your home Member State regulates the profession; or
- Evidence that you pursued the activity on a full time basis for one year or for an equivalent overall duration on a part-time basis during the previous 10 years in another Member State which does not regulate that profession AND evidence of qualifications or one of more Attestation(s) of competence if the Member Stat does not regulate the profession. The requirement of one year professional experience does not apply if the education is regulated in the home Member State.

If certain documentation/information is missing this may result in delays to your application. You will be contacted if documentation/information is missing from your application.

⁷ An Attestation of Competence can be a specific examination without prior training, or full-time pursuit of the profession in a Member State for three consecutive years or for an equivalent duration on a part-time basis during the previous 10 years.

Please note that we may contact the Competent Authority or relevant authorities in the relevant Member State to verify information provided or to gain additional information for the purposes of assessing your qualification or Attestation of Competence.⁸

If you do not provide this documentation or this information cannot be ascertained from the relevant authority, after providing you with opportunities to provide the information, you will be notified that your application will be closed unless information is received. If you later provide the information required, your file can be reopened but you may need to resubmit documentation already provided, if your file has been deleted under the relevant Data Protection policy.

Your relevant qualification(s) will be compiled and compared against the Essential Learning Outcomes/Key Understandings of the relevant accepted Irish qualification(s). The Panel will then decide if the profession you are qualified for is the same as the profession of gas installer in Ireland.

You may provide additional information or expired qualifications to be assessed for the Panel to consider, if you wish to do so.

Qualifications in the following sectors are relevant to the RGI scheme:

- Gas
- Plumbing
- Gas Fitter or Pipefitting
- Refrigeration
- Electrical .

Note: Applicants with electrical qualification will need additional relevant qualifications **and** experience related to gas.

and/or

⁸ An Attestation of Competence can be a specific examination without prior training, or full-time pursuit of the profession in a Member State for three consecutive years or for an equivalent duration on a part-time basis during the previous 10 years.

- Qualification(s) which have qualified you to practise as a Gas Installer in the Member State where it was obtained/recognised.

If you have any combination of the above, you should include them in your application (including expired qualifications).

There are two types of tables in the application form to set out your qualifications, should you choose to do so:

- Use the **Type A** table for longer courses (1 or more years) such as apprenticeship qualifications.
- Use the **Type B** table for any shorter (less than one year) relevant qualifications.

You may expand the tables as necessary to include all information which you wish the Panel to assess.

2.5 Work Experience

You may also have skills that have been gained through your professional experience which you would like the Panel of Experts to consider. Please provide your professional history to allow the Panel to identify any Essential Learning Outcomes/Key Understandings gained through work experience. Please demonstrate an appropriate level of competence by describing your main duties and specific examples of the works you have undertaken. This will enable the Panel to determine if you are qualified to carry out the same role as RGI in Ireland.

You may wish to include the following:

- i. other relevant supporting documentation, such as certificates of completed works, testimonies from customers, etc. if applicable.
- ii. A current curriculum vitae (CV) setting out the chronology of work.

Information on professional experience outside of the Attestation of Competence is optional. They are suggested in order to avoid requests for clarification and limit compensatory measures.

2.6 Essential Learning Outcomes/Key Understandings

Please ensure that you read the Essential Learning Outcomes/Key Understandings document.

All applications to the gas recognition process will be assessed against the Essential Learning Outcomes/Key Understandings of the accepted Irish qualifications. This is to enable the Panel to determine if you are qualified to carry out the same role as an RGI in Ireland.

Sections 5 and 6 of the application form provides you with an opportunity to demonstrate to the Panel of Experts that you meet the Essential Learning Outcomes/Key Understandings. You may complete these with information you feel is relevant to the learning outcomes.

You should outline, where in your qualification(s), you have gained the relevant learning outcomes, if applicable. You may also provide examples of work experience where you practised and used the relevant skill(s).

The above is optional and is requested to enable the Panel to clearly identify whether your application can be accepted or whether any substantial differences (deficits) between your qualification(s) and the Essential Learning Outcomes/Key Understandings, your relevant work experience will be considered. If substantial deficits are identified, the Panel will then be able to use this information to determine whether compensation measures or subsequently Partial Access could be recommended.

You may include this information in Section 7.1 (Domestic Gas) of the Application Form.

In addition:

- If you have a **Plumbing** qualification(s) you may wish to complete **Table 6.2**.
- If you have a **Fitter/Pipefitting** qualification(s) you may wish to complete **Table 6.3**.
- If you have a Refrigeration qualification(s) you may wish to complete **Table 6.4**.

If you do not have experience for a particular learning outcome (or part thereof) or are unsure where your experience fits against the Essential Learning Outcomes/Key Understandings, please state this in the allocated space of the application form. This will ensure your application continues to progress quickly and enable the Panel to quickly identify deficits and how these can be addressed.

3 Supporting Documentation

Translations

If the documentation is not in English, please also provide a translation along with a copy of the documents. This translation does not need to be certified.

3.1 Proof of Identification

Please supply one of the following as proof of identification:

- **Passport:** include a copy of the front page and the photo page
- **National photo ID card:** include a copy of both sides of the card/document
- **Photo driving licence:** include a copy of both sides of the card/document

3.2 Proof of Nationality

Please supply one of the following:

- **Passport:** include a copy of the front page and the photo page
- **National photo ID card:** include a copy of both sides of the card/document
- **Birth certificate:** please ensure the photocopy does not cut off any information

To be considered an 'eligible person' under the Directive, if you are not a national of a Member State (listed in Appendix 3), you must belong to one of the following categories:

- **Refugee or other protected status:** must supply proof of such i.e. Convention Travel Document from an EEA member state or Switzerland
- **Family member and right of residence in the state:** the Applicant must supply proof of both i.e. a birth or marriage certificate and proof of residency.

You must be an 'eligible person' to apply through this process. If you are not an eligible person, please visit the CRU [website](#) to obtain information on the application process for non-eligible persons.

3.3 Proof of Eligibility to Practice

If the domestic gas works industry is regulated in the country in which you gained the professional qualification and/or Member State of nationality, you may wish to provide evidence of being registered with the Competent Authority in your Member State. This may be done by supplying a:

- **Letter of Registration or ID card** or a Confirmation from the Competent Authority / Regulatory Body.

Note: This is optional. If submitting documentation and it is not in English, you may supply a copy of the original **and** a version translated into English. This information can be supplied at Section 3 of the Application Form.

Please note that we may contact the Competent Authority or other relevant authorities in the relevant Member State to verify information provided or to gain additional information for the purposes of assessing your qualification or Attestation of Competence.⁹

3.4 Proof of Professional Qualifications

You must provide the following as proof of professional qualifications:

- Evidence of qualifications or Attestation of Competence¹⁰ if your home Member State regulates the profession; or
- Evidence that you pursued the activity on a full time basis for one year or for an equivalent overall duration on a part-time basis during the previous 10 years in another Member State which does not regulate that profession AND evidence of qualifications or one of more Attestation(s) of competence if the Member State does not regulate the profession. The requirement of one year professional experience does not apply if the education is regulated in the home Member State. The requirement of one year professional experience can be waived if the education is regulated in the home Member State.

In addition, you may choose to provide the following to assist the Panel in completing their assessment:

You may submit the following as proof of professional qualifications:

- **Professional Qualification:** Certificate(s) from the institution(s) or training provider(s) can be accepted. Certificate(s) are the final award given proving the course/training has been completed. You may include expired qualifications to be assessed by the Panel.

⁹ An Attestation of Competence can be a specific examination without prior training, or full-time pursuit of the profession in a Member State for three consecutive years or for an equivalent duration on a part-time basis during the previous 10 years.

¹⁰ An Attestation of Competence can be a specific examination without prior training, or full-time pursuit of the profession in a Member State for three consecutive years or for an equivalent duration on a part-time basis during the previous 10 years.

- **Official Transcripts:** transcripts of the course listing modules taken may be provided to assist the Panel in assessing your application. It is not necessary to include the results of each module.

If you have other documentation setting out your professional qualifications, you may submit these as part of your application.

Please provide proof of each professional qualification that you have listed in Section 5 of the application form. The CRU may contact the awarding authority to verify your qualifications.

If the documentation is not in English, please submit a copy of the original and a version translated into English.

3.5 Proof of Professional Work Experience

You may also wish to provide proof of your professional experience. This can be done, for example, by supplying at least one employment reference for an employer you list in Section 5 of your application:

- **Written Reference from Employer:** reference confirming that you have completed the tasks listed in your application.

Note: References should be written on headed paper/email by a named person and include their phone number and/or email address. If you are unable to provide written references, but would still like the CRU to seek references, if necessary, please provide the contact details for your former employers. The CRU may contact these employers to verify your work experience and to seek additional details, as necessary.

Should you have any questions about completing your application form, please contact the RGI scheme by email: gasrecognition@rgi.ie

Appendix 1 – Partial Access

The CRU shall grant Partial Access on a case-by-case basis, when all the following conditions are fulfilled:

- i. The Applicant is fully qualified to exercise as the equivalent of an RGI in their home Member State.
- ii. Differences between the gas activities exercised in an Applicant's home Member State, and the RGI Scheme as such are so large that the application of compensation measures would amount to requiring the Applicant to complete the full apprenticeship programme in Ireland to have full access to the scheme.
- iii. The gas activity required of the Applicant can be pursued with the cooperation of an existing RGI. The task of certification of work will not form part of Partial access.

It is envisaged that Partial Access would apply where an Applicant demonstrates competence in one or more, but not all, areas that would be required of an RGI. Given that the RGI scheme relates to domestic Gas Works, only there is no option to provide an Applicant with registration to the schemes to carry out some Gas Works but not others, on the grounds of safety due to the fact that some works may impact other gas appliances in the home or the gas installer may observe issues with other appliances and ventilation, while working in the home. Therefore, where deficits cannot be bridged by compensation measures, the Panel would consider whether the Applicant could be provided with an option to work with an RGI to enable them to carry out works in areas where they are competent to do so. The RGI could then review and certify the work, having regard to the impacts of the work on other areas of the home.

Appendix 2 – Temporary Access

For gas installers legally established in another Member State for the purpose of pursuing the same profession there and who wish to provide temporary services in Ireland, to carry out gas works, a **written declaration** must be submitted by the Service Provider to RGI in advance of carrying out any services, or where there has been a material change to information previously submitted with a written declaration. The written declaration should contain the following information:

- Proof of nationality;
- Your address in the Member State of establishment.
- An attestation certifying that you are legally established in a Member State for the purpose of pursuing the activities concerned and that you are not prohibited from practicing, even temporarily, at the moment of delivering the attestation;
- evidence of your professional qualifications;
- any means of proof that you have pursued the activity concerned for at least one year during the previous 10 years. The condition of one year's pursuit shall not apply if the profession or the education and training leading to the profession is regulated.
- where you move, if you have pursued that profession in one or several Member States for at least one year during the last 10 years preceding the provision of services when the profession is not regulated in the Member State of establishment. The condition of one year's pursuit shall not apply if the profession or the education and training leading to the profession is regulated.
- a certificate concerning the nature and duration of the activity issued by the competent authority or body of the Member State where the service provider is established, if applicable;
- The register in which you are registered and your registration number or equivalent means of identification contained in that register, if you are registered in a commercial register or similar public register;.
- If the activity is subject to authorisation in your Member State of establishment, the name and address of the competent supervisory authority;
- Any professional association or similar body with which you are registered;
- Your professional title or, where no such title exists, your formal qualification and the Member State in which it was awarded.;
- If the activity is subject to VAT, your VAT identification number;

- Details of any insurance cover or other means of personal or collective protection with regard to professional liability.

The above declaration will be valid for one year during which you intend to provide temporary or occasional services in the Republic of Ireland. Such declaration shall be renewed if you intend to provide temporary or occasional services in a subsequent year or, at any time, if there is a material change to any of the information provided in a previous declaration.

The Temporary Access Declaration can be submitted in any form to gasrecognition@rgi.ie or a form is available on request.

No later than one month after receipt of the declaration and accompanying documents, referred to above, you will be informed of the decision:

- (a) not to check your professional qualifications;
- (b) having checked your professional qualifications:
 - (i) to require you to take an aptitude test; or
 - (ii) to allow the provision of services.

Please note that we may ask the relevant competent authority information around professional qualifications and disciplinary matters relating to you.

You will be subject to the same rules of registration and statutory requirements as a Registered Gas Installer while providing your services in Ireland. This will include an inspection on work completed by RGI. A fee will be charged for these inspections.

Appendix 3 - European Economic Area (EEA) Countries

Country	Regulated Y/N	Relevant Competent Authority
Austria	Y	Federal Minister for Digital and Economic Affairs
Belgium	N	
Bulgaria	N	
Croatia	Y	Ministry of Economy, Entrepreneurship and Crafts
Cyprus	N	
Czechia	N	
Denmark	Y	Sikkerhedsstyrelsen
Estonia	N	
Finland	N	
France	Y	Chambre de Métiers et de l'Artisanat
Germany	Y	
Greece	Y	National Organisation for the Certification of Qualifications & Vocational Guidance
Hungary	Y	Hungarian Office for Mining and Geology
Iceland	Y	Ministries of Industries and Innovation
Ireland	Y	Commission for Regulation of Utilities
Italy	N	
Latvia	N	
Liechtenstein	N	
Lithuania	N	
Luxembourg	N	
Malta	N	
Norway	Y	Directorate for Civil Protection and Emergency Planning
Poland	N	
Portugal	Y	Directorate-General for Energy and Geology
Romania	N	
Slovakia	N	
Slovenia	Y	Department of Infrastructure
Spain	Y	Ministry of Industry, Commerce and Tourism
Sweden	N	
Switzerland	N	

Country	Regulated Y/N	Relevant Competent Authority
The Netherlands	N	